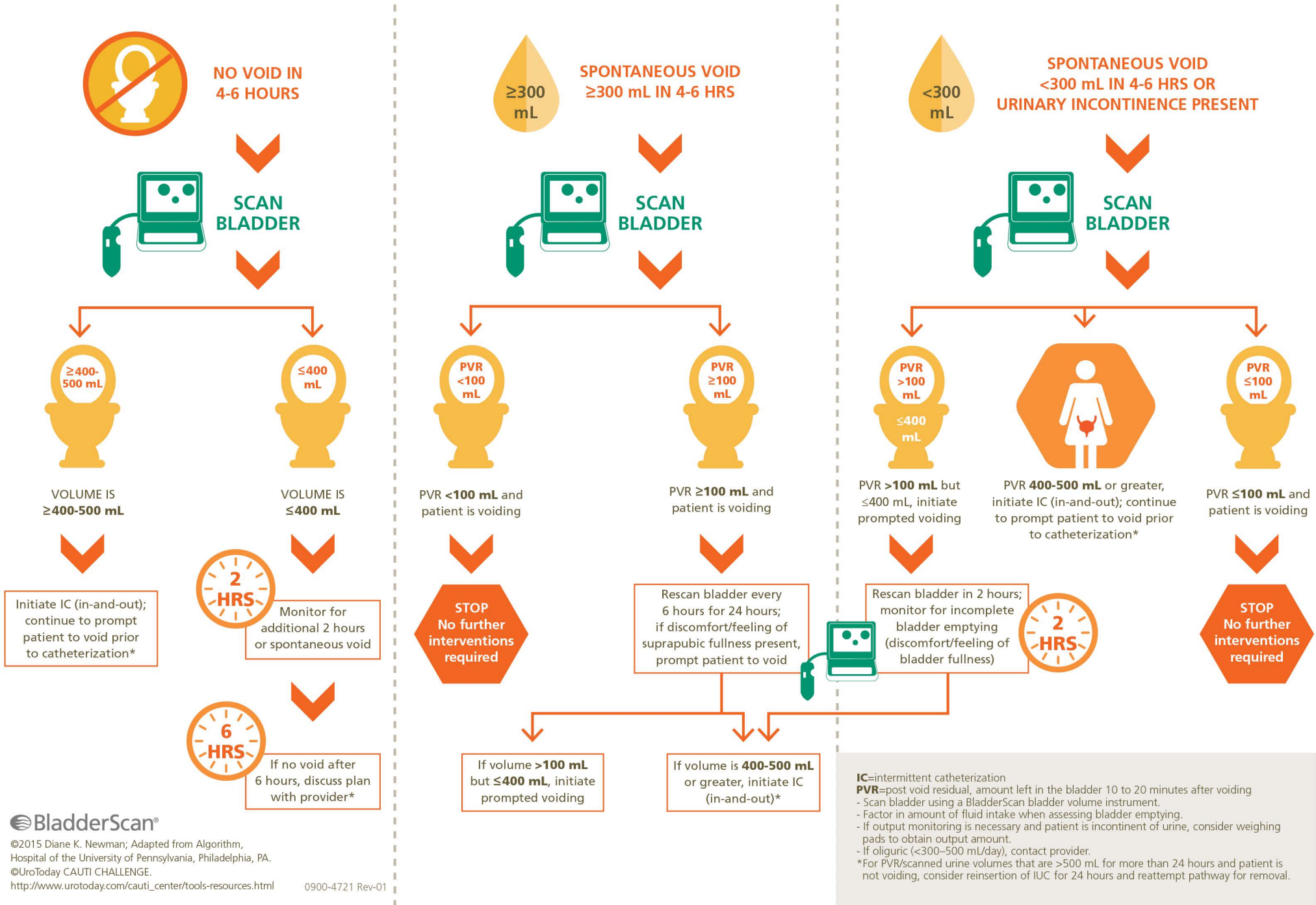


BLADDER MANAGEMENT PATHWAY

POST-INDWELLING URINARY CATHETER (IUC) REMOVAL

A bladder management protocol using bladder ultrasound to determine the need for urinary catheterization.



Guideline for the Prevention of Catheter Associated Urinary Tract Infections 2009

Indications for Indwelling Catheter Use

Table 2

A. Examples of Appropriate Indications for Indwelling Urethral Catheter Use¹⁻⁴

Patient has acute urinary retention or bladder outlet obstruction

Need of accurate measurements of urinary output in critically ill patients

Perioperative use of selected survival procedures:

- Patients undergoing urologic surgery or other surgery on contiguous structures of the genitourinary tract
 - Anticipated prolonged duration of surgery (catheters inserted for this reason should be removed in PACU)
 - Patients anticipated to receive large-volume infusions or diuretics during surgery
 - Need for intraoperative monitoring of urinary output
-

To assist in healing of open sacral or perineal wounds in incontinent patients

Patient requires prolonged immobilization (e.g., potentially unstable thoracic or lumbar spine, multiple traumatic injuries such as pelvic fractures)

To improve comfort for end of life care if needed

Guideline for prevention of catheter-associated urinary tract infections 2009

Carolyn V. Gould, MD, MSCR 1; Craig A. Umscheid, MD, MSCE², Rajender K. Agarwal, MD, MPH², Gretchen Kuntz, MSW, MSLIS²; David A. Pegues, MD³ and the Healthcare Infection Control Practices Advisory Committee 9HICPAC)⁴

¹Division of Healthcare Quality Promotion Centers for Disease Control and Prevention Atlanta, GA

²Center for Evidence-based Practice University of Pennsylvania HealthSystem Philadelphia, PA

³Division of Infectious Diseases

⁴David Geffen School of Medicine at UCLA Los Angeles, CA



**DEVELOPED THROUGH AN EDUCATIONAL GRANT FROM VERATHON INC.
IN COLLABORATION WITH**

Diane K. Newman, DNP, FAAN, BCB-PMD
Co-Director, Penn Center for Continence and Pelvic Health Director, Clinical Trials,
Division of Urology Research Investigator Senior Adjunct Associate Professor of Surgery,
Perelman School of Medicine, University of Pennsylvania



verathon.com